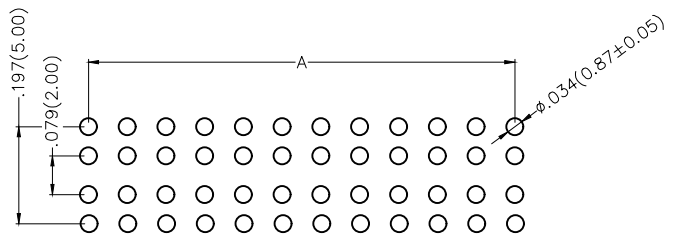
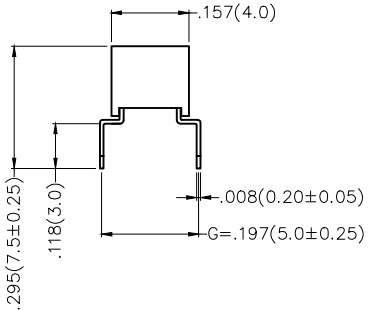
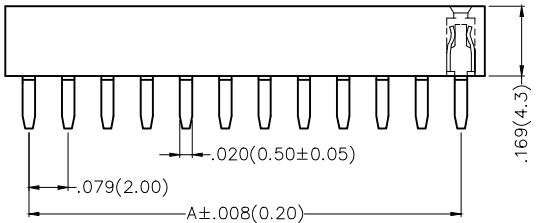
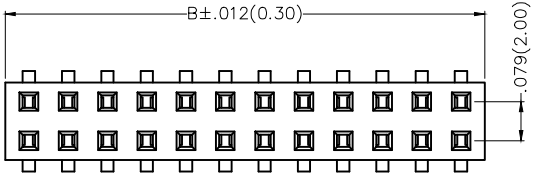


REV	LOCATIONS	DESCRIPTION	DATE	REVISER	APPD

**SPECIFICATIONS**

**Electrical**  
 Current Rating: 2A AC(rms)/DC  
 Voltage Rating: 250V AC(rms)/DC  
 Contact Resistance: 20 mΩ Max  
 Insulation Resistance: 1000 MΩ Min  
 Withstanding Voltage: 500V AC r.m.s  
 Temperature Range—Operating: -40°C~+85°C

**Material and Plating**  
 Housing: Glass Filled Polyester (UL 94V-0)  
 Contact Pin: Brass  
 Plating: Gold Plated/Selective gold on contact area, tin on tail



Recommended P.C.Board Layout

**Ordering Information**

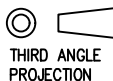

FFH 200 39 — D XX S X XX X BK K A  
 1 2 3 4 5 6 7 8 9 10 11 12

1 <u>Category</u> FFH—Female Header	2 <u>Series Number</u> 200—Pitch 2.00mm	3 <u>Distinction No.</u> 39	4 <u>Row Option</u> D—Double Row	5 <u>Circuits</u> XX	6 <u>Entry Angle</u> S—180° Vertical
7 <u>Plating</u> 1—Gold Plated 3—Selective gold on contact area, tin on tail	8 <u>Thickness of Plating</u> 00—Gold Flash 05—5μ" Custom plate available	9 <u>Material—Resin</u> 1—PBT 4—PA6T	10 <u>Color—Resin</u> BK—Black	11 <u>Packaging</u> K—Tray	12 <u>Type</u> A—G=5.0mm

<p>THIRD ANGLE PROJECTION</p>	<p>GENERAL TOLERANCES (UNLESS SPECIFIED)</p>		<p>APPROVE BY LEO</p>	<p>DATE 23/AUG/23</p>	<p>PART NO. FFH20039-DXXSXXXBKKA</p>	<p>ITEM NO. FFH20039</p>	<p>Building Technology Cornerstone</p>	
	<p>DESIGN UNITS Inch (metric)</p>	<p>X. ± 0.012 (0.30)</p>	<p>X. ± 5*</p>	<p>CHECKED BY GISELLE</p>	<p>DATE 23/AUG/23</p>	<p>TITLE Board to Board (Female Header) Pitch 2mm 180° Vertical (DIP)</p>		<p>REV 0</p>
<p>SCALE 5:1</p>	<p>SIZE A4</p>	<p>X.XX ± 0.006 (0.15)</p>	<p>.XX ± 1*</p>	<p>DRAWN BY MATT</p>	<p>DATE 23/AUG/23</p>	<p>THIS DRAWING CONTAINS INFORMATION THAT IS PROPRIETARY TO TXGA INDUSTRIAL ELECTRONICS(S.Z)CO.,LTD AND SHOULD NOT BE USED WITHOUT WRITTEN PERMISSION</p>		

REV	LOCATIONS	DESCRIPTION	DATE	REVISER	APPD

Circuits (n)	Part No.	Dimensions(in/mm)		Circuits (n)	Part No.	Dimensions(in/mm)	
		A	B			A	B
4	FFH20039-D04SXXXXBKKA	.079(2.00)	.173(4.40)	44	FFH20039-D44SXXXXBKKA	1.654(42.00)	1.748(44.40)
6	FFH20039-D06SXXXXBKKA	.157(4.00)	.252(6.40)	46	FFH20039-D46SXXXXBKKA	1.732(44.00)	1.827(46.40)
8	FFH20039-D08SXXXXBKKA	.236(6.00)	.331(8.40)	48	FFH20039-D48SXXXXBKKA	1.811(46.00)	1.906(48.40)
10	FFH20039-D10SXXXXBKKA	.315(8.00)	.409(10.40)	50	FFH20039-D50SXXXXBKKA	1.890(48.00)	1.984(50.40)
12	FFH20039-D12SXXXXBKKA	.394(10.00)	.488(12.40)	52	FFH20039-D52SXXXXBKKA	1.969(50.00)	2.063(52.40)
14	FFH20039-D14SXXXXBKKA	.472(12.00)	.567(14.40)	54	FFH20039-D54SXXXXBKKA	2.047(52.00)	2.142(54.40)
16	FFH20039-D16SXXXXBKKA	.551(14.00)	.646(16.40)	56	FFH20039-D56SXXXXBKKA	2.126(54.00)	2.221(56.40)
18	FFH20039-D18SXXXXBKKA	.630(16.00)	.724(18.40)	58	FFH20039-D58SXXXXBKKA	2.205(56.00)	2.299(58.40)
20	FFH20039-D20SXXXXBKKA	.709(18.00)	.803(20.40)	60	FFH20039-D60SXXXXBKKA	2.283(58.00)	2.378(60.40)
22	FFH20039-D22SXXXXBKKA	.787(20.00)	.882(22.40)	62	FFH20039-D62SXXXXBKKA	2.362(60.00)	2.457(62.40)
24	FFH20039-D24SXXXXBKKA	.866(22.00)	.961(24.40)	64	FFH20039-D64SXXXXBKKA	2.441(62.00)	2.535(64.40)
26	FFH20039-D26SXXXXBKKA	.945(24.00)	1.039(26.40)	66	FFH20039-D66SXXXXBKKA	2.520(64.00)	2.614(66.40)
28	FFH20039-D28SXXXXBKKA	1.024(26.00)	1.118(28.40)	68	FFH20039-D68SXXXXBKKA	2.598(66.00)	2.693(68.40)
30	FFH20039-D30SXXXXBKKA	1.102(28.00)	1.197(30.40)	70	FFH20039-D70SXXXXBKKA	2.677(68.00)	2.772(70.40)
32	FFH20039-D32SXXXXBKKA	1.181(30.00)	1.276(32.40)	72	FFH20039-D72SXXXXBKKA	2.756(70.00)	2.850(72.40)
34	FFH20039-D34SXXXXBKKA	1.260(32.00)	1.354(34.40)	74	FFH20039-D74SXXXXBKKA	2.835(72.00)	2.929(74.40)
36	FFH20039-D36SXXXXBKKA	1.339(34.00)	1.433(36.40)	76	FFH20039-D76SXXXXBKKA	2.913(74.00)	3.008(76.40)
38	FFH20039-D38SXXXXBKKA	1.417(36.00)	1.512(38.40)	78	FFH20039-D78SXXXXBKKA	2.992(76.00)	3.087(78.40)
40	FFH20039-D40SXXXXBKKA	1.496(38.00)	1.591(40.40)	80	FFH20039-D80SXXXXBKKA	3.071(78.00)	3.165(80.40)
42	FFH20039-D42SXXXXBKKA	1.575(40.00)	1.669(42.40)				

 THIRD ANGLE PROJECTION	GENERAL TOLERANCES (UNLESS SPECIFIED)		APPROVE BY LEO	DATE 23/AUG/23	PART NO. FFH20039-DXXSXXXXBKKA	ITEM NO. FFH20039	 Building Technology Cornerstone	
	X.±.012(0.30)	X.±5'	CHECKED BY GISELLE	DATE 23/AUG/23	TITLE Board to Board (Female Header) Pitch 2mm 180° Vertical (DIP)			REV 0
	X.X±.008(0.20)	.X'±2"	DRAWN BY MATT	DATE 23/AUG/23	THIS DRAWING CONTAINS INFORMATION THAT IS PROPRIETARY TO TXGA INDUSTRIAL ELECTRONICS(S.Z)CO.,LTD AND SHOULD NOT BE USED WITHOUT WRITTEN PERMISSION			SHEET NO. 2/2
	X.XX±.006(0.15)	.XX'±1"						
SCALE 5:1	SIZE A4	X.XXX±.004(0.10)	.XXX'±0.5'					